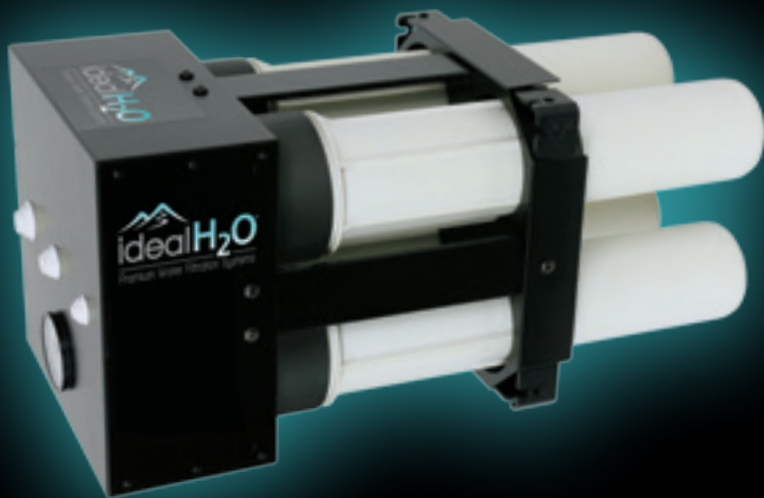


# SETUP AND MAINTENANCE GUIDE

---

## High Output Catalytic Reverse Osmosis System

---

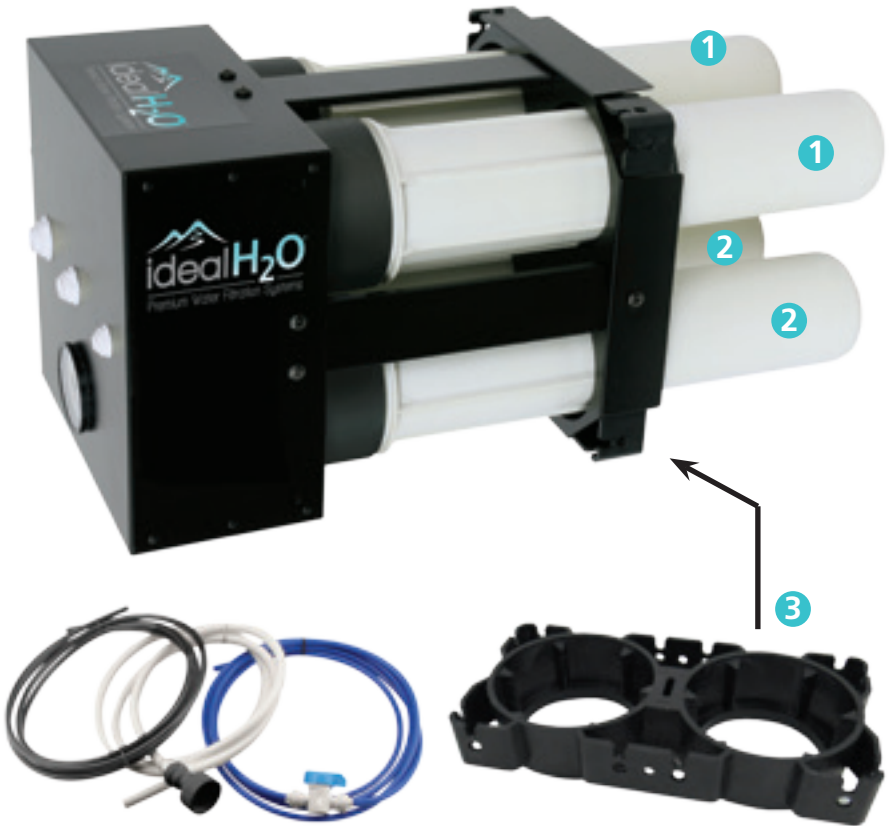


**700 GPD STANDARD RO SYSTEM**  
PRODUCT #738382

## WHAT'S IN THE BOX?



# High Output Catalytic Reverse Osmosis System



# IDEAL H<sub>2</sub>O® REVERSE OSMOSIS 700 GPD PART LIST:

- 1. Catalytic Carbon Pre-filter – Removes chloramines, chlorine, odor, and other chemicals.
- 2. Reverse Osmosis Membrane – Two 350 GPD Filters – Removes total dissolved solids (TDS).
- 3. Wrench/support leg.
- 4. System Pressure Gauge – Measures water pressure and quickly identifies when to replace pre-filters.
- 5. Water Source Inlet – 1/2" White tubing with garden hose connector.
- 6. Clean Water Outlet – 3/8" Blue tubing.
- 7. Waste Water Outlet – 1/4" Black tubing.
- 8. Handles/Wall Mount – You may stand this system up, lay it down, or hang it up!



UNIT SIZE	12.25" l x 11.25" w x 25" h
BOX SIZE	12.75" l x 12.5" w x 26.5" h
CAPACITY	700 gpd / 29 gph
PRESSURE	Min - 50 psi; Max - 100 psi
TEMPERATURE	Min - 40° F; Max - 110° F
INLET TDS	Min - 50 ppm; Max - 1000 ppm
HARDNESS	Min - 0 grains (0 mg/l); Max - 10 grains (171 mg/l)
OPERATING pH	Min - 3; Max - 11
PERMEATE/WASTE	1 gallon permeate: 1 gallon waste
EFFICIENCY	700 gpd @ 60 psi, 77° F, 500 ppm

# QUICK OPERATION GUIDE

The following steps will get you setup in just a few minutes. Please read each step carefully. If you have any questions, please refer to our website at [www.IdealH2O.net](http://www.IdealH2O.net) for information and videos on setup and maintenance, or for technical questions call 888-528-2762.

## STARTING YOUR RO SYSTEM:

1. Connect the (White) 1/2" sized tubing into the 1/2" inlet port on the system. Connect the other end of the tubing with the garden hose connector to your water source.
2. Connect the (Blue) 3/8" sized tubing into the 3/8" clean port on the system. This is your filtered water. Run this tubing to your tank.
3. Connect the (Black) 1/4" sized tubing into the 1/4" waste port on the system. Connect the other end of this tubing to your drain.
4. Turn your water supply on.



Allow water to run 30-40 minutes to flush out the system before use, especially after changing the filters and membranes.

## REMEMBER

Performance of your system depends on 3 factors:

1. Inlet water temperature.
2. Inlet water pressure.
3. Inlet water quality (TDS, hardness, etc.).

# MAINTENANCE AND FILTER CHANGES

The Ideal H<sub>2</sub>O® Reverse Osmosis Systems has pre-filters that will need to be replaced after a certain time period of use. By keeping up with the replacement of your filters, you can double or even triple the life of your RO membranes. The length of time these filters will last completely depends on how clean your water source is.

Depending on your water source, your membranes should last between 6 months and 2.5 years. Again, by changing your pre-filters regularly, the RO membranes will last much longer.

## REMOVING PRE-FILTERS/MEMBRANES:

**Note:** Filter housings are filled with water. Ensure proper drainage is in place before changing filters.

- Step 1** – Turn off water supply and remove tubing.
- Step 2** – Stand unit up to remove lower bracket.
- Step 3** – Using a Phillips head screwdriver remove all 8 screws connecting the lower bracket to the upper bracket. (See Fig. A)
- Step 4** – Slide bottom bracket down, but do not remove. (See Fig. B)
- Step 5** – Unscrew one of two screws connecting the lower bracket to the wrench/support leg. (See Fig. C) Then, set unit on it's side and remove lower bracket.
- Step 6** – Grip each filter housing manifold using the wrench/support leg and turn in a counterclockwise to expose the used filters. (See Fig. D)
- Step 7** – Dispose of used filters.

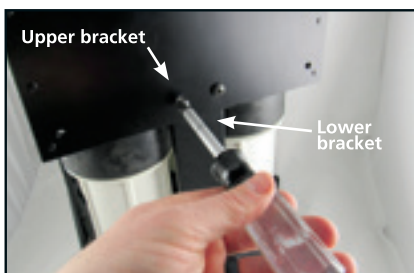


Fig. A

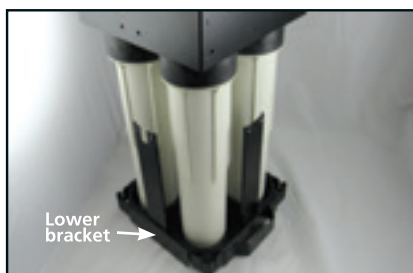


Fig. B

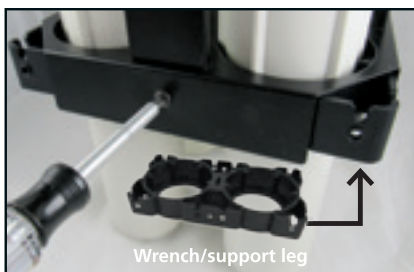


Fig. C



Fig. D

# INSTALLING PRE-FILTERS AND MEMBRANES

- Step 1** – Remove new filter from the packaging.  
**Note:** Using sterile/latex Grower’s Edge® gloves is highly recommended.
- Step 2** – Make sure O-rings are lubricated (NSF approved lubricant recommended) on both the membrane and inside the filter housing manifold.
- Step 3** – Insert new filters into the correct upper bracket openings. Make sure the top of each filter is securely in place. (See Fig. A)  
**Note:** Filters must connect to their specific openings. (See Fig. B)
- Step 4** – Cover each filter with a filter housing manifold. Screw manifolds into the upper bracket to secure. Tighten the housing firmly, but do not overtighten. (See Fig. C)
- Step 5** – Reassemble the wrench/support leg and lower bracket. (See Fig. D)
- Step 6** – Stand unit up for easier assembly and make sure the mounting handles align. (See Fig. E)
- Step 7** – Reattach bottom bracket to upper bracket with all 8 screws. (See Fig. F)
- Step 8** – Reinsert tubing into proper locations. Turn on water supply and run the system 30-40 minutes.



Fig. A

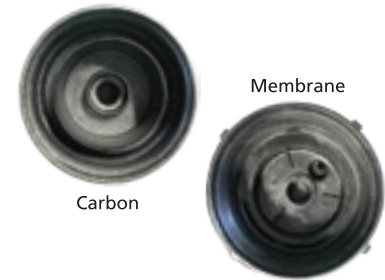


Fig. B



Fig. C

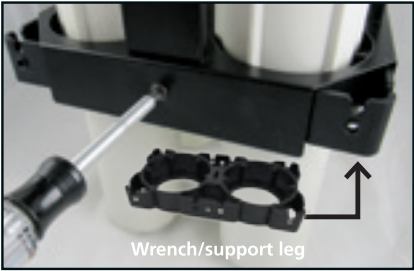


Fig. D



Fig. E

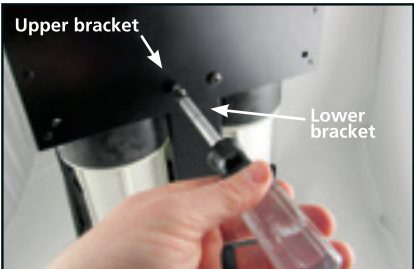


Fig. F

# REPLACEMENT FILTERS



REPLACEMENT FILTER INFO	PART #	FILTER REPLACEMENT TIMELINE
CATALYTIC CARBON FILTER	738385	6 MONTHS – 1 YEAR
MEMBRANE	738386	6 MONTHS – 2.5 YEARS*

## TROUBLESHOOTING

ISSUE	POSSIBLE CAUSE	CORRECTION
Low flow or no production	Low pressure	Increase pressure, add booster pump, limit tubing length, increase tubing size on input.
	Water temperature	Increase water temp; it takes longer to permeate through the membrane with cold water.
	Low water quality/ well water feed	Make sure to have pre-filtration to ensure longevity of your system and to prevent heavy metals and large minerals from clogging your pre-filters; Replace membranes.
	Clogged pre-filters	Change pre-filters, keep an eye on the built in gauge when you see pressure drop, replace pre-filters.
	Flow restrictor is clogged	Contact Ideal H <sub>2</sub> O® support for replacement flow restrictor.
	Kink in the line/leaking	Replace kinked tubing/Contact Ideal H <sub>2</sub> O® support for replacement fittings.
	Auto shut-off valve stuck	Contact Ideal H <sub>2</sub> O® support for replacement ASV.
Too much drain/drain not shutting off	Low feed pressure	Increase pressure, consider booster pump, limit tubing length, increase tubing size on input.
	Auto shut-off valve stuck	Contact Ideal H <sub>2</sub> O® support for replacement ASV.
	Leak in feed line/clean water line/leak in housing	Replace tubing or leaking fittings; Lubricate O-rings and tighten filter housings.
Poor clean water quality	Testing within the first hour of operation/flush	Take a sample after an hour of operation.
	Low feed pressure	Increase pressure, consider booster pump, limit tubing length, increase tubing size on input.
	Clogged pre-filters	Change pre-filters, keep an eye on the built in gauge when you see pressure drop, replace pre-filters; replace membranes.
	Membranes not installed correctly	Make sure O-rings are lubricated and pressed in all the way; tighten housing.



For all warranty inquiries, please contact  
Ideal H<sub>2</sub>O® at (888) 582-2762.



[www.IdealH2O.net](http://www.IdealH2O.net)

Scan this QR code or visit our website for  
how-to videos and other product information.



Exclusively distributed by:

Sunlight Supply, Inc.

[www.sunlightsupply.com](http://www.sunlightsupply.com)