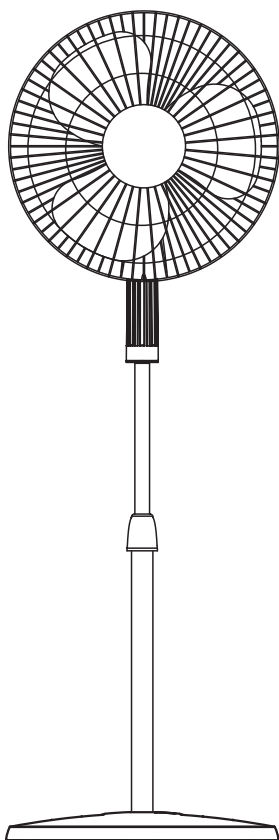


Hurricane®

16" OSCILLATING STAND FAN

OWNER'S MANUAL



READ AND SAVE THESE INSTRUCTIONS

Note: Pictures in the manual are for reference only.



CAUTION

Read rules for safe operation and instructions carefully.

WARNING

This appliance has a polarized plug (one blade is wider than the other). To reduce the risk of electric shock, this plug is intended to fit in a polarized outlet only one way. If plug does not fit fully in the outlet, reverse the plug. If it still does not fit, contact a qualified electrician. DO NOT attempt to defeat this safety feature.

RULES FOR SAFE OPERATION

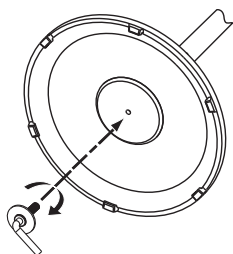
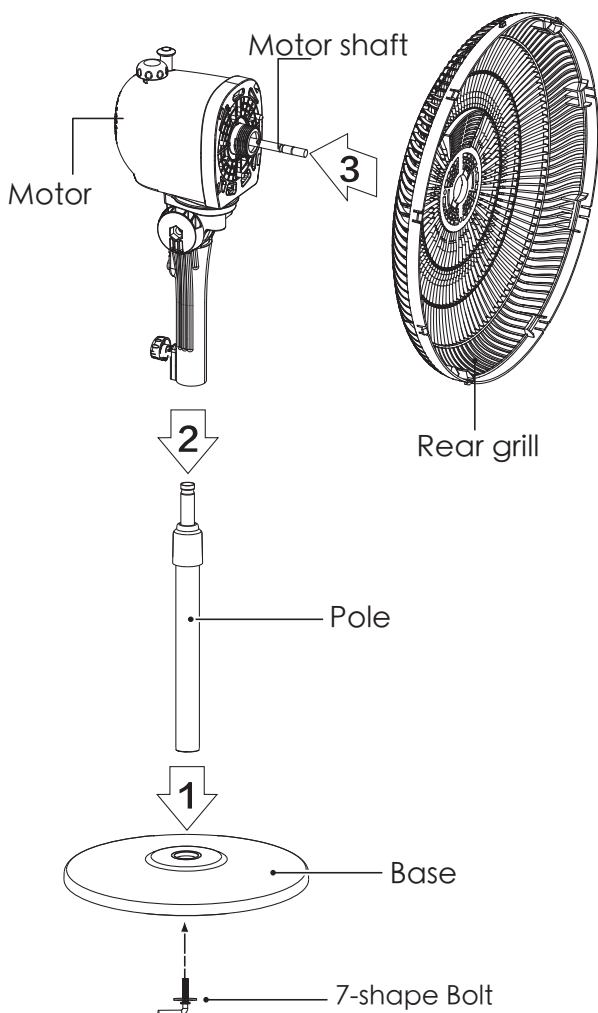
1. Never insert fingers, pencils, or any other object through the grill when fan is running.
2. Disconnect fan when moving from one location to another.
3. Disconnect fan when removing grills for cleaning.
4. Be sure fan is on a stable surface when operating to avoid overturning.
5. DO NOT use fan in window. Rain may create electrical hazard.
6. Ensure that the fan is switched off from the supply mains before removing the grill.

THE RULES ABOUT CORD AND PLUG AS BELOW:

1. This product employs overload protection (fuse). A blown fuse indicates an overload or short-circuit situation. If the fuse blows, unplug the product from the outlet. Replace the fuse as per the user servicing instructions (follow product marking for proper fuse rating) and check the products. If the replacement fuse blows, a short-circuit may be present and the product should be discarded or returned to an authorized service facility for examination and/or repair.
2. DO NOT operate any fan with a damaged cord or plug. Discard fan or return to an authorized service facility for examination and/or repair.
3. DO NOT run cord under carpeting. DO NOT cover cord with throw rugs, runners, or similar coverings. DO NOT route cord under furniture or appliances. Arrange cord away from traffic area and where it will be tripped over.

INSTALLATION INSTRUCTIONS

Name of components.



BASE INSTALLATION

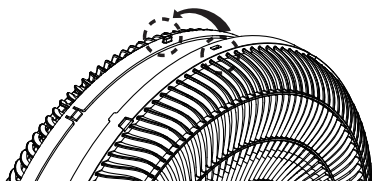
Align the column with the groove on the base and fix them together using a right-angle bolt.

NOTE:

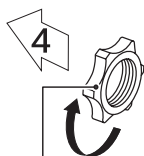
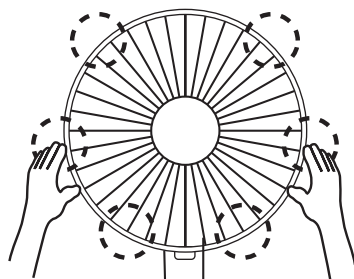
Remove parts from the component before performing installation.

FRONT AND REAR GUARD INSTALLATION

Align catch of the front guard with the illustrated position of the rear guard.



Press guards with both hands.



Lock nut of grill

- Screw the lock nut of grill clockwise, and in the meantime, fix the rear grill.



Blade

- Pull the blade to rotate after installing, so as to ensure that the blade can be normally rotated.

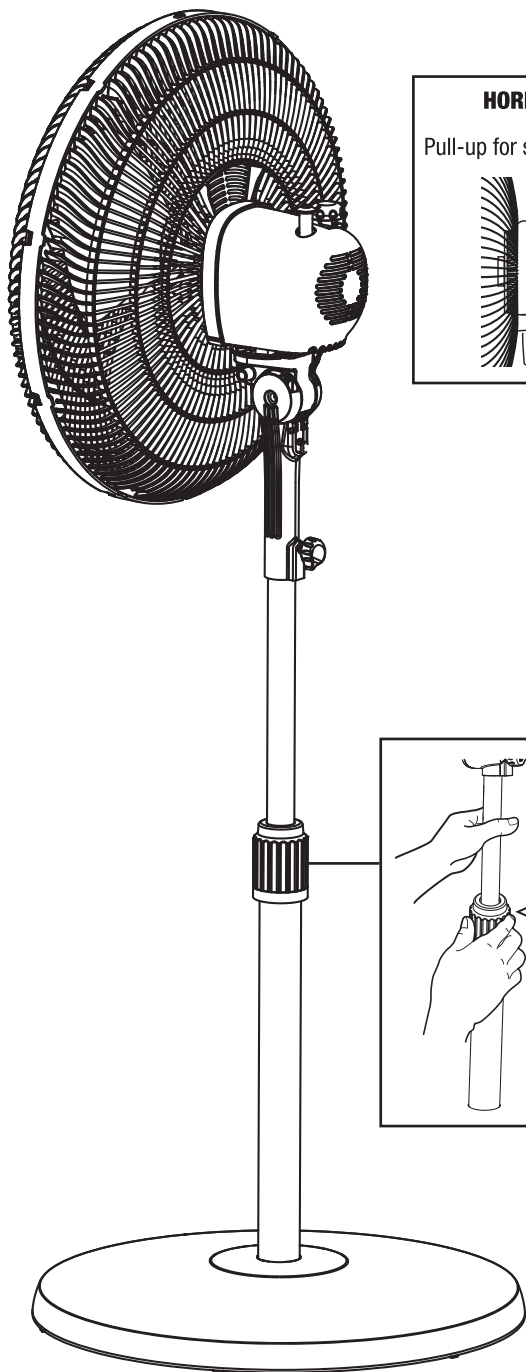


- Lock nut of blade anticlockwise, and then install the front fan cover.



Front grill

INSTRUCTIONS FOR USE



HORIZONTAL SWING

Pull-up for static

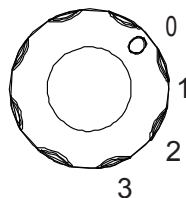


Push-down to swing



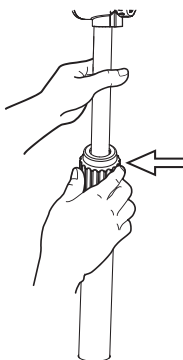
Swing Pull-knob

SPEED CONTROL KNOB



HEIGHT ADJUSTMENT

Turn counter-clockwise and loosen for performing height adjustment.



USER SERVICING INSTRUCTIONS

- a) Grasp plug and remove from the receptacle or other outlet device. DO NOT unplug by pulling on cord.
- b) Open fuse cover. Slide open fuse access cover on top of attachment plug towards blades.
- c) Remove fuse carefully. Insert the tip of your tool into fuse slot (close with the terminal), then prize the fuse gradually and slowly, but not overexert. If you feel tight, you can try it at several times and prize the fuse little by little. When one side of the fuse has been prized, then you can get the fuse out entirely.
- d) Risk of fire. Replace fuse only with 2.5 Amp, 125 Volt fuse.
- e) Close fuse cover. Slide closed the fuse access cover on top of attachment plug.
- f) Risk of fire. DO NOT replace attachment plug. Contains a safety device (fuse) that should not be removed. Discard product if the attachment plug is damaged.

NOTICE:

- 1. When you replace the fuse, please don't operate suddenly or overexert, or else the product will be damage or cause accident.
- 2. When you feel it hard to be operated, please make sure you have got the right way.

NOTES

This image shows a single sheet of white paper with horizontal ruling lines. The lines are evenly spaced and run across the width of the page. There are no margins, text, or other markings on the paper.

Hurricane®

16" OSCILLATING STAND FAN

PARTS
#736541
#736542

Use a "QR Code App" on your smart phone to access our website and
browse our entire product offering or go to"

www.hurricane-fans.com



Exclusively distributed by:



Sunlight Supply, Inc.

SunlightSupply.com