

Hurricane®

Supreme Series

Supreme 16" Stand Fan



Use a "QR Code App" on
your smart phone to access
our website and browse our
entire product offering or go
to: www.hurricane-fans.com



Hurricane®
www.hurricane-fans.com



Exclusively distributed by:
National Garden Wholesale®
Sunlight Supply, Inc.
www.sunlightsupply.com

Part #736507

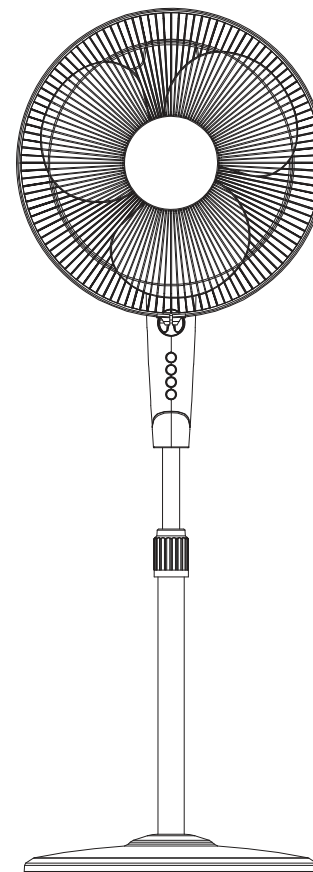
READ AND SAVE THESE INSTRUCTIONS

CLEANING

1. Be sure to unplug from the power source before cleaning.
2. Plastic parts should be cleaned with a soft cloth

Correct Disposal of this product

This marking indicates that this product should not be disposed with other household wastes throughout the EU. To prevent possible harm to the environment or human health from uncontrolled waste disposal, recycle it responsibly to promote the sustainable reuse of material resources. To return your used device, please use the return and collection systems or contact the retailer where the product was purchased. They can take this product for environmental safe recycling.



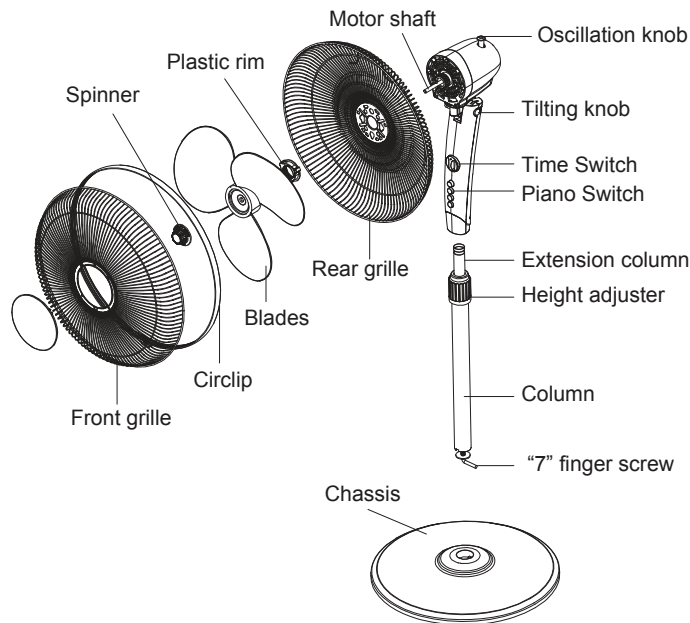
WARNING

1. Do not leave the fan running unattended.
2. Keep electrical appliances out of reach from children.
Do not let them use the appliances without supervision.
3. If the power cord is damaged, it must be replaced by manufacturer.

RULES FOR SAFE OPERATION

1. Never insert any object through the grille when fan is running.
2. Disconnect fan when moving from one location to another.
3. Be sure the fan is on a stable surface when operating.
4. Indoor use only.

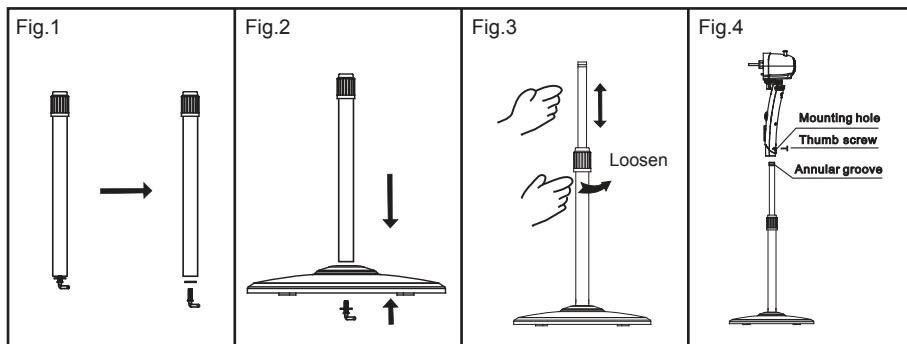
PART FIGURE



ASSEMBLY OF CROSS STAND & COLUMN UNIT

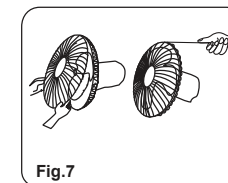
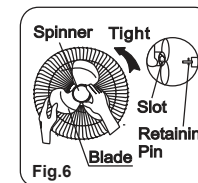
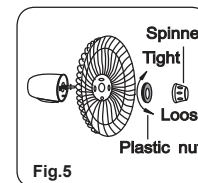
1. Unscrew the "7" finger screw from the Extension Pole. (Fig.1)
2. Insert the extension pole in the chassis and tighten the "7" Finger screw. (Fig.2)
3. From the extension pole loosen the height adjustment ring and adjust the internal pipe to the desired height. (Note: If you can't find the internal pole, it slides inside the extension pole. You can pull it out from the extension pole.) (Fig.3)
4. To attach the head unit to the extension pole, loosen the thumb screw on the bottom of the head unit. Place the head unit on the extension pole and tighten the thumb screw in alignment with the groove on the internal pole. (Fig.4)

CAUTION: Height adjustment ring must be fully fastened before the assembly of the motor section to the extension pole.



GUARD & FAN BLADE ASSEMBLY

1. Unscrew the spinner clockwise (or take the spinner out from the bag) and the plastic nut counter clockwise to remove both of them. Fix the rear guard to the motor then tighten the plastic nut again. (Fig. 5)
2. Insert the blade into shaft, and make sure the rotor shaft pin is fitted into groove of the blade. Turn the spinner counter clockwise to tighten the blade. (Fig. 6)
3. Fasten the front guard and the rear guard by the guard clip and then tighten the fan guard locking screw and nut. (Fig. 7)



OPERATING INSTRUCTION

1. SPEED CONTROL

Fan speed is controlled by the piano switch :
0-1-2-3 (Off-Low-Medium-High)

2. TIME CONTROL(Fig.8)

Turn the knob of time switch (8) to the right and set the time. The time switch is cut at the time within 120 minutes. In case the switch is not used, set the time switch (8) to "ON".

3.OSCILLATION CONTROL (Fig.9)

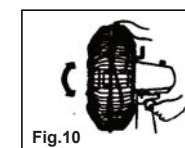
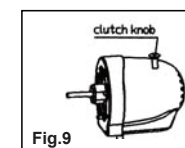
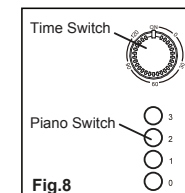
To make the fan oscillate, press the clutch knob located on the top of the motor housing. To get the directional airflow, pull the clutch knob up to its initial position.

4.TILT ADJUSTMENT (Fig.10)

To adjust the air flow upward or downward, push the guards lightly to the desired direction.

5.HEIGHT ADJUSTMENT

The height of the fan can be adjusted by loosening the locknut carefully raising or lowering the fan and firmly re-tightening the locknut.



MAINTENANCE INSTRUCTION

The fan requires little maintenance. Do not try to fix it by yourself. Refer it to qualified service personnel if service is needed.

1. Before cleaning and assembling, fan must be unplugged.
2. To ensure adequate air circulation to the motor, keep vents at the rear of the motor free of dust. Do not disassemble the fan to remove dust.
3. To Clean the exterior parts with a soft cloth.
4. Do not use any abrasive detergent or solvents.
5. Do not allow water or any other liquid into the motor housing or interior parts.